



Adeptia Suite 6.2

Maintenance Patch

Patch Deployment Guide

Last updated date: August 22, 2014

Contents

Contents.....	2
Patch Details.....	3
Applies To.....	3
Licensing.....	3
Applying Patch.....	3
Post Patch Application Steps.....	5
Activities to be re-configured.....	6
Remove Patch.....	8
Appendix A: Identify Backend Database.....	11
Appendix B: Exporting and Deploying Rich Forms.....	11
Exporting Rich Forms.....	11
Deploying Rich Forms.....	12
Appendix C: Updating Latest License.....	12
Updating License on Windows.....	13
Updating License on Linux.....	14
About Adeptia Inc.	15

Patch Details

Patch Name : AdeptiaSuite_6_2_01_22Aug_2014.zip
Build Tag : Release_6_2_01_22Aug2014

Applies To

This patch can be applied on Adeptia Suite Version 6.2 GA Release.

Licensing

In this patch, support for three new applications have been added in Data Interface. To use those new options, you need to update the latest license. Otherwise, you will not be able to view those new options. So it is recommended that you should get the latest license and update it after applying the patch.

To get the latest license contact support@adeptia.com .

To know how to apply the license, refer the [Appendix C: Updating Latest License](#) section.

Applying Patch

This section explains how to apply the patch.

Pre-Requisites:

1. Take the backup of the backend database.

Before applying the patch, it is recommended to take the backup of the database that is used as backend by Adeptia Suite.

In case the embedded database is used as backend, follow the steps below to take its backup:

- a. Stop Kernel and WebRunner.
- b. Go to `./AdeptiaServer/ServerKernel` folder.
- c. Copy the `embeddedDB` folder and keep it into a separate folder.

In case any other database is used as backend database, you need to follow the backup instruction given by that Database Server.

To know, which database is used as backend database, refer to [Appendix A : Identify Backend Database](#) .

2. Also make sure that you have *Read* and *Write* permission on all subfolder and files of `../AdeptiaSuite-<Version>`

3. All events must be de-activated before applying the patch.
4. Before applying the patch, make sure that any process flow should not be in *Running* or *Queued* state.
5. If you are already using Rich forms, then you need to first export the Rich Forms, and then apply the patch. After applying the patch, you need to import the Rich Forms again. To know how to export the Rich Forms, refer [Appendix B: Exporting and Deploying Rich Forms](#) section.
6. Kernel and WebRunner must be stopped before you start applying the patch.

Following are the high level steps to apply the patch.

1. Download the latest patch from the provided URL.
2. Extract the downloaded zip file in a new folder in the **same drive** where Adeptia Suite is installed.
3. Open the command prompt and change to the folder where you have extracted the patch zip.
4. Depending on the operating system you are using, run one of the following commands:

For Windows

Apply-RecoverPatch.bat <Path where Adeptia Suite is installed.>

Example:

Apply-RecoverPatch.bat "C:\Program Files\AdeptiaSuite\AdeptiaSuite-6.2\AdeptiaServer"

For Linux

./Apply-RecoverPatch.sh <Path where Adeptia Suite is installed.>

Note: In case the path contains spaces, enter the path within double quotes.

5. This will apply the patch.
6. This will also apply the B2Bi accelerator, in case you have applied the patch with updated B2Bi accelerator.

Notes:

- Patch application may take more time when there are large number of records in backend and log databases.
- Once the patch is applied, a recovery file *Recovery_<Date-Time Stamp>.zip* is created in the same folder from where you have applied the patch. This file is used in case you want to recover or rollback the patch.
- A *migration.log* file is also created, which contains the logs generated during patch application in the same folder from where you have applied the patch. This file can be used to troubleshoot any issue related to patch application.

7. Restart the Kernel and Web Runner.

Note:

- In case you are using B2Bi accelerator, you need to reconfigure some of the pre-bundled activities. Please refer [Activities to be Reconfigured](#) section for the list of activities, which need to be re-configured.

Post Patch Application Steps

There are some configuration files, which have some modifications. Those configuration files are also bundled with the patch, but do not get deployed automatically. When you extract the patch, you can see these files in the root of extracted folder. You need to first configure those properties files as per the existing configuration, and then replace it in your Adeptia Suite environment.

This section describes how to configure those configuration files.

Following table lists the configuration files that you need to configure and the path where you need to replace them.

File Name with path	File Path	Description
export.xml	/ServerKernel/MigrationUtility/	<p>This file is used when you use Migration Utility to export objects using Silent Mode or Non Interactive mode. This file have been modified because new services have been added in Adeptia Suite.</p> <p>If you are using Migration Utility in Silent Mode or Non Interactive mode, then configure this file as per the existing files and replace it in the Adeptia Suite environment.</p> <p>By default this file is placed in /ServerKernel/MigrationUtility folder.</p> <p>In case you are using this file from any other location then replace this file in that location.</p>

Note:

- After applying the patch, you need to clear the browser history before you login into the Adeptia Suite. To know how to clear the browser history, refer the documentation of the browser, which you are using.

Activities to be re-configured

This section contains the list of activities, which need to be reconfigured, after you apply the latest patch. This section is applicable only if you are using B2Bi Accelerator.

1. **Mail Target Activities**
 - a. EDINACKNotification
 - b. EDIInterchangeErrorNotification

2. **Mail Notification**
 - a. SystemErrorNotification

In the activities, listed above, you need to re-configure the mail parameters. These parameters get overridden by the dummy values which are defined in the EDI zip.

In case you have enabled “Delete File on Success” for B2Bi processing, then you need to re-enable it in the Advanced Properties of following activities:

3. **File Source Activities**
 - a. InboundFileSource
 - b. OutboundFileSource
 - c. RoutingSource
4. **FTP Source Activities**
 - a. InboundFTPSource
 - b. OutBoundFTPSource

In case you have enabled the log file generation in B2Bi accelerator, then you need to reconfigure the process flow variables as mentioned in the table below:

Process Flow > EDIInboundProcessor > Process Flow Variable:	
generateLogFile	This should be set to <i>true</i> if you want to generate the log file for inbound processing.
logFilePath	Path where you want to generate the log file.
Log_PathPrefix	Path prefix of the target file displayed in the log file.
Process Flow > EDIOutboundProcessor > Process Flow Variable:	
generateLogFile	This should be set to <i>true</i> if you want to generate the log file for outbound processing.
logFilePath	Path where you want to generate the log file.

Log_PathPrefix	Path prefix of the target file displayed in the log file.
Process Flow > EDISubBatchProcessor > Process Flow Variable:	
generateLogFile	This should be set to <i>true</i> if you want that the path of FA should be written in the inbound log file.
logFilePath	Path where you want to generate the log file. Note: This path should be same as the path defined for <i>logfilePath</i> variable in EDIInboundProcessor process flow.
Log_PathPrefix	Path prefix of the target file displayed in the log file.

To enable the reset transaction set control number for EDI outbound flow, you need to change following process variables as mentioned in the table below:

Process Flow > EDISubBatchProcessor> Process Flow Variable:	
resetTransactionControlNumber	This should be set to <i>true</i> if you want to reset the transaction set control number in outbound processing.
Process Flow > EDIBatchProcessor > Process Flow Variable:	
resetTransactionControlNumber	This should be set to <i>true</i> if you want to reset the transaction set control number in outbound processing while batch mode is selected as Yes.

Remove Patch

This section explains how to remove the patch. Depending on the scenario you can choose one of the following options:

- **Recover Patch**

Use this option, if any error comes while applying the patch. This will bring the Adeptia Suite environment to the previous state similar to before applying the patch.

- **Rollback Patch**

Use this option when you have applied the patch successfully and later on decided to remove the patch. This option will bring your Adeptia Suite environment to the previous state. All the objects that you have created or modified, after applying the patch, will persist in the Adeptia Suite environment.

Pre-requisite:

- **All events must be de-activated before removing the patch.**
- Before recovering the patch, Kernel and WebRunner must be stopped.

Following are the high level steps to recover the patch:

1. Go to folder, where you have extracted the Patch and open the *patch.xml* file (see Figure 1).

```
<Configuration>
  <!-- Select mode as "deployment" for patch deployment and "recovery" for patch recover
  <Patch mode="deployment">
    <InstallationDirectory comment="Location of Adeptia Suite installation direct
    <PatchFileLocation comment="Location of patch file to be deployed. It is not
    <IsDatabaseUpdateRequired comment="Specifies whether database shall be upda
    <RecoveryFileLocation comment="For patch deployment mode, it specifies the lo
    Recovery.zip
  </RecoveryFileLocation>
  <!-- Remove "Accelerators" tag in case you don't want to deploy any accelerat
  <Accelerators>
    <AcceleratorFileLocation name="EDI">EDI.zip</AcceleratorFileLocation>
    <AcceleratorFileLocation name="SampleObjects">SampleObjects.zip</Acce
  </Accelerators>

  </Patch>
</Configuration>
```

Figure 1: Patch.xml File

2. Replace *deployment* highlighted in the above figure with *recovery*.
3. Also replace *Recovery.zip* with the name of the recovery file which is created during patch application.
4. Save this file.
5. Go to the command prompt and change to the folder where you have extracted the patch.
6. Depending on the operating system you are using, run one of the following commands:

For Windows

Apply-RecoverPatch.bat <Path where Adeptia Suite is installed.>

Example:

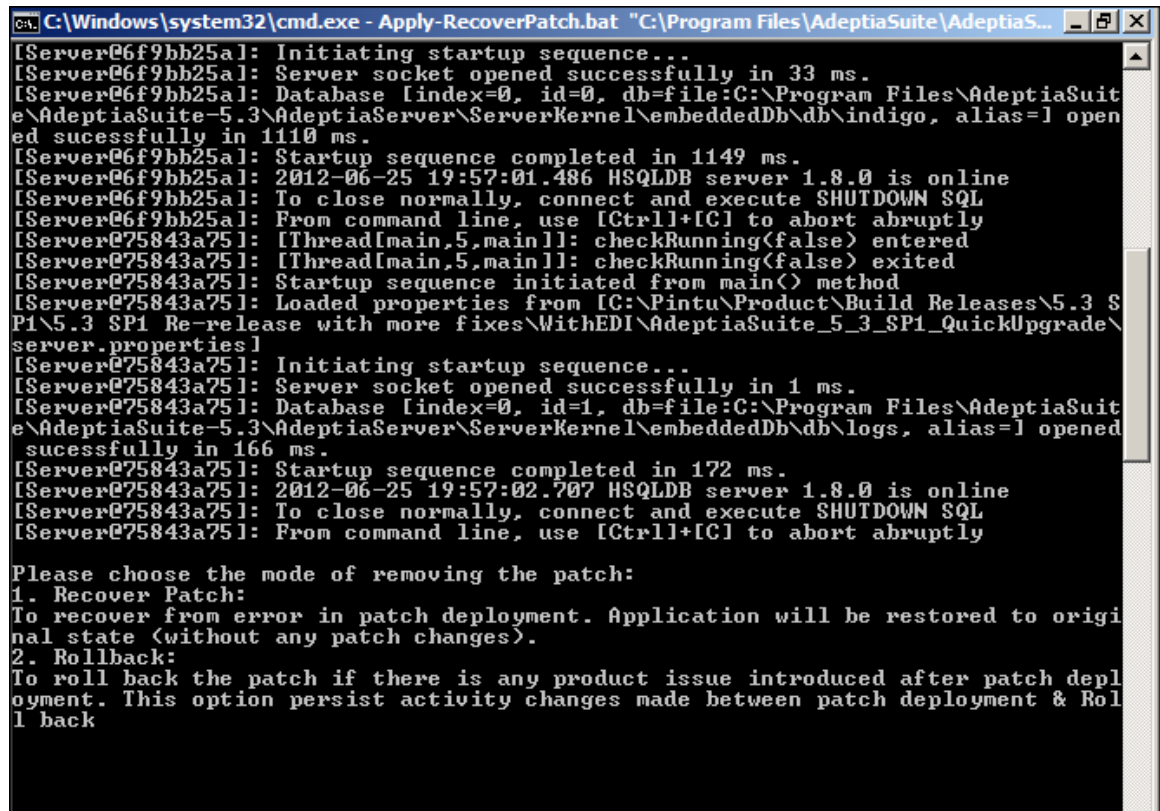
Apply-RecoverPatch.bat "C:\Program Files\AdeptiaSuite\AdeptiaSuite-6.2\AdeptiaServer"

For Linux

./Apply-RecoverPatch.sh <Path where Adeptia Suite is installed.>

Note: In case the path contains spaces, enter the path within double quotes.

- Once you run the above command, you will be asked to choose the mode of removing the patch (see Figure 2).



```

C:\Windows\system32\cmd.exe - Apply-RecoverPatch.bat "C:\Program Files\AdeptiaSuite\AdeptiaS...
[Server@06f9bb25a]: Initiating startup sequence...
[Server@06f9bb25a]: Server socket opened successfully in 33 ms.
[Server@06f9bb25a]: Database [index=0, id=0, db=file:C:\Program Files\AdeptiaSuite\AdeptiaSuite-5.3\AdeptiaServer\ServerKernel\embeddedDb\db\indigo, alias=1] opened successfully in 1110 ms.
[Server@06f9bb25a]: Startup sequence completed in 1149 ms.
[Server@06f9bb25a]: 2012-06-25 19:57:01.486 HSQLDB server 1.8.0 is online
[Server@06f9bb25a]: To close normally, connect and execute SHUTDOWN SQL
[Server@06f9bb25a]: From command line, use [Ctrl]+[C] to abort abruptly
[Server@75843a75]: [Thread[main,5,main]]: checkRunning(false) entered
[Server@75843a75]: [Thread[main,5,main]]: checkRunning(false) exited
[Server@75843a75]: Startup sequence initiated from main() method
[Server@75843a75]: Loaded properties from [C:\Pintu\Product\Build Releases\5.3 SP1\5.3 SP1 Re-release with more fixes\WithEDI\AdeptiaSuite_5_3_SP1_QuickUpgrade\server.properties]
[Server@75843a75]: Initiating startup sequence...
[Server@75843a75]: Server socket opened successfully in 1 ms.
[Server@75843a75]: Database [index=0, id=1, db=file:C:\Program Files\AdeptiaSuite\AdeptiaSuite-5.3\AdeptiaServer\ServerKernel\embeddedDb\db\logs, alias=1] opened successfully in 166 ms.
[Server@75843a75]: Startup sequence completed in 172 ms.
[Server@75843a75]: 2012-06-25 19:57:02.707 HSQLDB server 1.8.0 is online
[Server@75843a75]: To close normally, connect and execute SHUTDOWN SQL
[Server@75843a75]: From command line, use [Ctrl]+[C] to abort abruptly

Please choose the mode of removing the patch:
1. Recover Patch:
To recover from error in patch deployment. Application will be restored to original state (without any patch changes).
2. Rollback:
To roll back the patch if there is any product issue introduced after patch deployment. This option persist activity changes made between patch deployment & Roll back
  
```

Figure 2: Patch Recovery

- If you want to remove the patch through **Recovery** mode, type **1** and press ENTER key.
If you want to remove the patch through **Rollback** mode, type **2** and press ENTER key.
- This will remove the patch, which you have applied.
- After removing the patch, refer the section [Post Patch Recovery Steps](#).

Appendix A: Identify Backend Database

This section explains how to identify, which database is used as backend.

1. Go `./AdeptiaServer/ServerKernel/etc` folder, where Adeptia Server is installed.
2. Open the `server-configure.properties` file.
3. Search the property `abpm.backend.dbType`. From the value of this property, you can identify which database is being used as backend. The following table lists the possible values and corresponding database.

Property Value	Database Type
HSQL	Embedded Database
Oracle	Oracle Database
SQLServer	SQL Server
MySQL	MySQL Database

Appendix B: Exporting and Deploying Rich Forms

If you are using Rich Form, it is important to export the Rich Form before applying the patch and then deploy it after applying the patch.

This section explains:

- Exporting Rich Form
- Importing Rich Form

Exporting Rich Forms

Steps to export the Rich Forms

1. Make sure that Kernel and WebRunner are started.
2. To start migration utility, go to `./bin` folder where Adeptia Suite is installed.
3. For Windows OS double click the `MigrationUtility.exe` file. The Adeptia Migration wizard is displayed

For Linux OS, go to `./ServerKernel` folder and type the following command:

```
./migrationutility.sh –console
```

4. Follow the Migration utility wizard to select **Stand Alone Build > Environment Promotion** and then *Export*.
5. Click **Next**.
6. Enter the path, where Adeptia Suite is installed and click **Next**.
7. Select the groups in which Rich Forms are created and click **Next**.
8. Select **All Objects** and click **Next**. The **Select Services** screen is displayed.
9. From the list of services select **CustomApplication** and click **Next**.
10. Enter the target folder, where you want to save the exported zip.
11. Click Next and then Finish. The Rich Forms will be exported and saved into a zip file within the specified folder.

Deploying Rich Forms

Steps to deploy the Rich Forms

1. Make sure that Kernel and WebRunner are started.
2. To start migration utility, go to `./bin` folder where Adeptia Suite is installed.
3. For Windows OS double click the MigrationUtility.exe file. The Adeptia Migration wizard is displayed

For Linux OS, go to `./ServerKernel` folder and type the following command:

```
./migrationutility.sh –console
```

4. Follow the Migration utility wizard to select **Stand Alone Build > Environment Promotion** and then **Deploy**.
5. Click **Next**.
6. Select the zip, which is created while exporting the Rich Forms and click **Next**.
7. Enter the path, where Adeptia Suite is installed and click **Next**.
8. In the next screen enter your name and click **Next**.
9. Click **Finish**.

Appendix C: Updating Latest License

After applying the patch you need to update the latest license. Otherwise you will not be able to view new services added in the patch. To get the latest license, contact support@adeptia.com.

Pre-Requisite:

- Ensure that the Kernel and WebRunner are not running.

Updating License on Windows

Steps to update the license:

1. Click **Start > Programs > Adeptia Suite** and then select **Update License**. The License Wizard appears (see Figure 3).

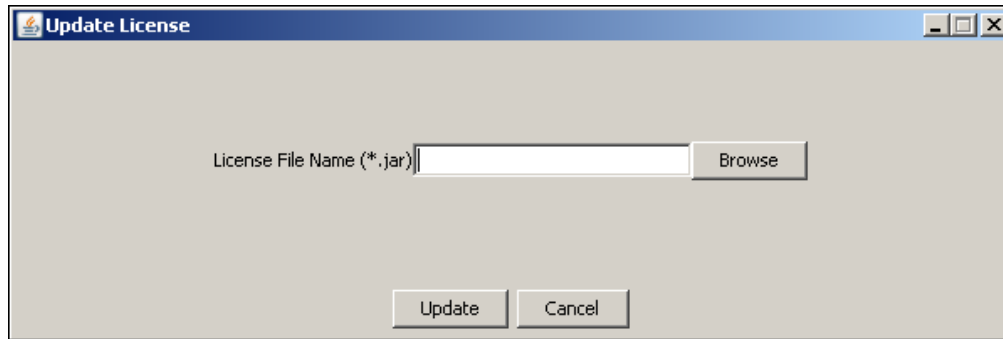


Figure 3: Select License File

2. Click **Browse** and select the *License.jar* file. The path of the selected file is shown in the *License File Name (*.jar)* field (see Figure 4).

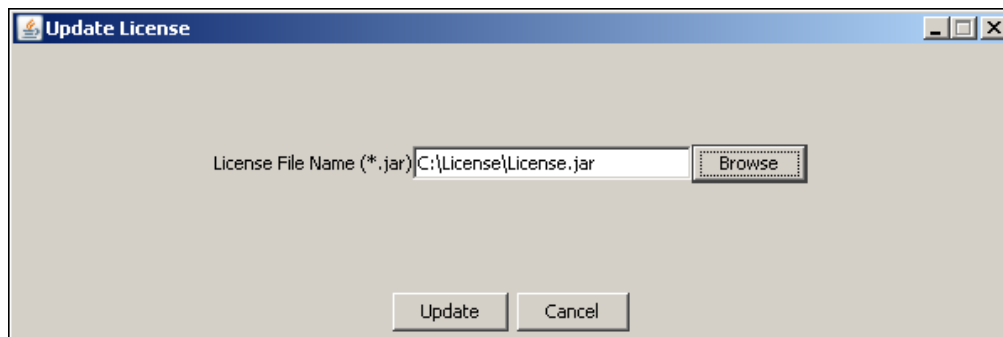


Figure 4: License File Path

3. Click **Update**. A warning message is displayed (see Figure 5).

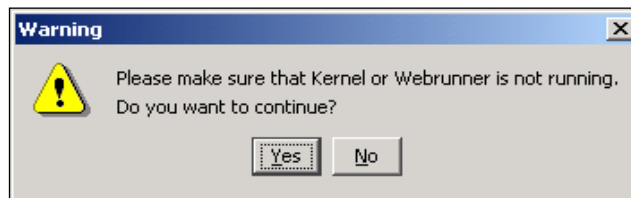


Figure 5: Warning Message

4. Make sure that Kernel and WebRunner are not running and click **Yes**. A dialog box appears confirming that the license is updated successfully (see Figure 6).

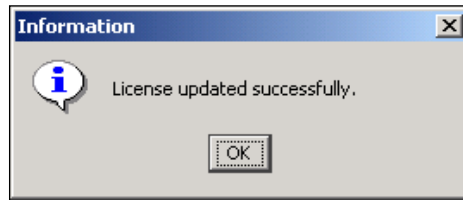


Figure 6: Confirmation Message

5. Click **OK** to close the dialog box.

Updating License on Linux

To update the license on Linux, you just need to copy the *License.jar* file in the **<InstallFolder>ServerKernel\etc** folder.



About Adeptia Inc.

Adeptia, an enterprise software company headquartered in Chicago, Illinois, provides a business process integration technology to easily and quickly automate business processes using industry-specific standards. Adeptia's unique product combines business process management with business-to-business integration. Adeptia's reusable and highly scalable technology has been deployed by Fortune 1000 companies. For more information, visit www.adeptia.com.

Adeptia Headquarters
343 West Erie, Suite 440
Chicago, IL 60654, USA
Email: info@adeptia.com